



## imagePROGRAF iPF8000

### Large Format Printer

The Canon imagePROGRAF iPF8000, 44" inch printer takes the next step in redefining large format printing. The new iPF8000 is the ideal solution for any color professional looking for impressive, full-bleed color output, strength in paper handling and exceptional speed in output. Advanced professional features such as automatic clogged nozzle detection and compensation for reliability, 330ml and 700ml selectable ink capacity sizes for versatility, a large backlit LCD panel for ease of use, and ink usage tracking for accountability are all part of the new iPF8000 to satisfy every color professional's large format printing needs. The 12-color pigment ink system with LUCIA inks was designed to expand the spectrum of color for environments from professional photographers to graphic designers to print for pays. The 12-ink colors enable the iPF8000 printer to deliver outstanding color and neutral and stable grayscale. The Canon L-COA processor, which is dedicated to the imagePROGRAF, is designed to optimize the best quality output at the highest possible speeds. Vivid breathtaking, long lasting prints are achieved by combining Canon's advanced technological achievements.

The many built in features that make this printer easy to use and maintain, are the driving force behind this powerful printer. With the printer's unique ability to print in unprecedented quality and speed along with the multiple media handling options and software suite, make the iPF8000 the ideal solution for all types of professionals. The iPF8000 is designed for reliability, simplicity, productivity and above all quality.

### Features:

- **12-Color Pigment Ink System** - New LUCIA inks expand the range of color reproduction by providing a wide color gamut.
- **Automatic Switching Between Black Inks** - Utilizes automatic switching between Regular Black and Matte Black Ink, helping to eliminate wasted ink and time of swapping out ink tanks.
- **New Print Head System** - Dual print head system with a total of 30,720 nozzles.
- **Borderless Printing** - 4-sided edge to edge printing, only with roll media.

**Non-firing Detection and Compensation Function** - When clogged or non-firing nozzles are detected; print head cleaning cycle is automatically executed. If the nozzle remains obstructed, the iPF8000 will automatically compensate by rerouting the ink to functioning nozzles.

### 12-Color Pigment Ink System - New LUCIA inks

#### LUCIA Pigment Ink Technology

The iPF8000 printer features a new 12-color pigment ink system featuring Red, Blue, Green, Gray, Photo Gray, Cyan, Photo Cyan, Magenta, Photo Magenta, Yellow, Regular Black, and Matte Black. The large color gamut provided by the 12 inks produces brilliant colors. The addition of gray and photo gray helps to create smooth gradations and less graininess, creating a crisp monotone output.



### **Automatic Switching of Black Inks**

The iPF8000 will automatically switch between Regular Black and Matte Black at the time of printing. Simply choose the paper type and the iPF8000 will use the appropriate black to optimize print quality.

**The Regular Black ink produces high quality prints on photo glossy type media and the Matte Black ink exhibits high contrast prints with deep black on media such as fine art paper.**

### **New Print Head - PF-02 - Dual print head system**

#### **Print Head (PF-02) -**

Engineered for speed and advanced image production, the iPF8000 boasts Canon's dual print head system to lay down ink with unprecedented speed and accuracy. Unlike conventional printers with a single print head, the iPF8000 uses two high-precision, high-density print heads with a total of 30,720 nozzles. It lays down precise 4pl ink droplets to produce sharp detail and excellent image quality.

The superfine 4pl droplets produce delicate color gradations and high-definition. The twin lines of nozzles on the new print heads enable the iPF8000 to minimize the number of printing passes and still maintain print quality. Each of the 2 print heads contain 6 colors, for a total of 12, each employing 2,560 nozzles for a grand total of 30,720 nozzles. This print head technology enables the iPF8000 to print at a true 1200 dot pitch with remarkable speed

### **L-COA Controller - New Print Controller**

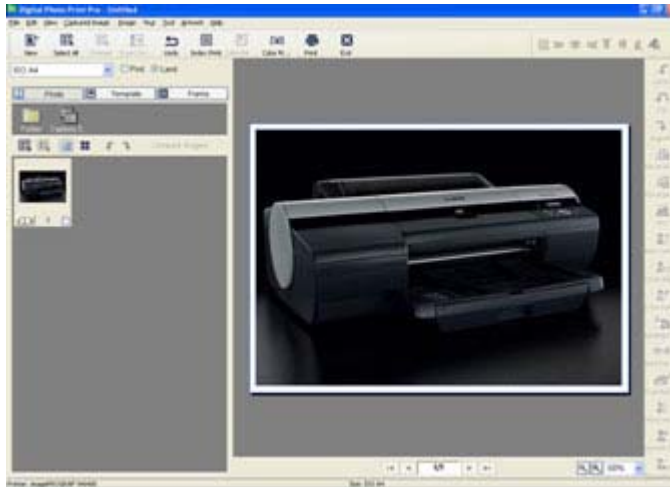
The L-COA<sup>1</sup> print controller intelligently processes the print data to implement high-speed processing in order to accurately lay ink down for optimal image quality. Combined with Canon's dual print head design and the most ink nozzles per color in the industry, the L-COA controller helps achieve print speeds of under three minutes for 16.5" x 23.4" (A2) size prints, at 1200 x 1200 dpi on a glossy photo paper.

(\*Print speeds noted here are bench-mark testing results conducted by Canon Inc. The testing conditions are as follows: The print time is measured from the start of printing until the image is exited out from the printer. These tests were conducted with a Pentium® 4 3.2GHz CPU running Windows XP, 1GB RAM, USB 2.0, from Adobe Photoshop 7.0, ISO/JIS-SCID No.5 (bicycle chart) enlarged to 410mm x 512.5mm, using printer driver default setting.)

### **DPPP - Software application with professional editing tools and templates**

This image editing and layout software is designed to easily edit and output large-format prints from images captured with a digital camera. For novice photo software users, DPPP simplifies advanced functions such as red-eye correction, dust removal, skin tone improvement and many other features. Furthermore, you can layout images in a variety of ways using the templates provided within the application. For Adobe Photoshop users, DPPP is capable of

2-way communication to enable the quick exchange of image files between the two programs. Avoid inaccurate prints by utilizing the Soft Proof function, which provides the ability to view the actual output colors in advance on the monitor, and the Real Preview function which confirms in advance how many images will be laid out on roll paper.



### Color Features

- Auto Color Correct
- Manual Color Correct with Dynamic RGB Histogram Chart
- Tone Curve Editing
- Profile Support for sRGB, Adobe® RGB
- Detailed Image Properties
- Sepia Hue Adjustment

### Image Correction Features

- Skin Tone Improvement
- Redeye removal (Auto/Manual)
- Dust/Scratch Removal
- Back Light Correction
- Moiré Removal
- White/Gray/Black Point Correction

### Layout Features

- Templates
- Calendars
- Index Printing
- Multiple Photo Layouts
- Text Insertion
- Frames
- Trimming
- Multiple Undo

### Print Plug-in for Adobe® Photoshop® - An export print module

This application was designed to enable direct printing of 16-bit RGB images directly from Adobe Photoshop 6, 7, CS and CS2. This plug-in is a true export module that bypasses the print driver on Windows® and Macintosh® computers. The module was designed to be an integral part of a photographer's 16-bit workflow without compromising image quality. The plug-in facilitates the printing of 16-bit images by processing the data outside the

conventional driver and sending the data directly from Photoshop to the printer, dramatically increasing gradations and as a result, overall image quality. The print history function enables the user to apply past color, profile and print settings to future jobs. The module allows for improved efficiency in color adjustment tasks and high-definition prints for Photoshop users.

## Features

- Soft proof - preview window
- Print history function
- Advanced color and quality controls
- Easily apply custom ICC profiles

## Printer Driver

The imagePROGRAF printer driver works with both Windows® and Macintosh® operating systems offering exceptional, high quality prints through easy usability and accurate color. The printer driver incorporates existing imagePROGRAF functions along with new, easy to use functions. The monochrome photo mode produces neutral, high quality monochrome images with the primary use of the black, gray and photo gray inks. This mode helps to ensure minimal shifts in color that are commonly caused by the use of color inks in black and white prints, thus outputting neutral tones with smooth gradation. Another easy to use feature is the free layout feature, which allows for custom nesting of separate images and documents.

## Features

- 14 preset document profiles (examples are Poster, CAD, Photo)
- Automatic print quality options dependent on print application and media
- Borderless printing
- Saturation and Gray Adjustment
- Easy Long Print
- Input Profiles
- Easy Setting/Advanced Setting
- Print Priority
- Monochrome photo mode
- Gray Adjustment
- 12-Color pigment ink
- Support for Adobe RGB
- Free layout feature
- Edit Using Poster Artist
- Enhanced profile settings
- Scan to Copy - iR enlargement copy

<sup>1</sup>Windows Only

## PosterArtist - Software application with poster designing and printing capabilities

This template driven software was developed by Canon specifically to create large-format posters easily. PosterArtist helps users of all levels to create professional looking posters, banners and signage with extreme ease. This application offers a variety of templates, hi-res royalty-free images and clipart designed to target a wide array of markets such as food service, education, offices, retail and much more.



## Features

- Provides professionally designed templates to simplify poster creation
- Over 1GB of preloaded files in a wide variety of poster designs and artwork
- Variable Data Printing
- Page Capture feature allows users to load desired data from other applications into a PosterArtist poster, such as Microsoft® Word®, Excel® and Adobe® Acrobat®
- Import images directly from most digital cameras
- PosterArtist QuickCopy - separate application with the ability to enlarge image data scanned with any CanoScan flatbed scanner